

Comark Extreme D Computer

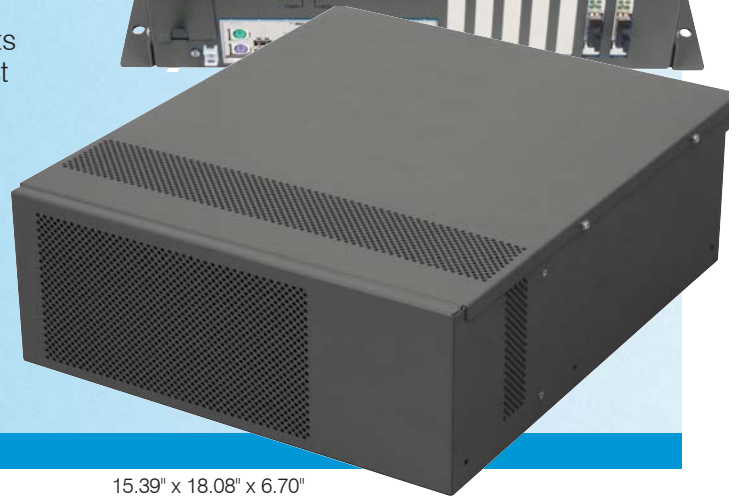
The Comark Extreme D is a liquid-cooled system designed to deliver high performance processing and graphics power in extreme environments.

Product Features and Benefits

- Liquid Cooling Technology
- -25°C to +50°C (-13°F to +122°F)
- Pentium 4 or Core 2 Duo
- High Performance Graphics Card
- Wireless Broadband or 802.11g
- Sealed Computer Enclosure Protects Internal Components from Dirt or Dust
- Flash or Disk

Suggested Applications

- Smooth, High Quality HDTV images
- Sheltered Outdoor Use in High Temperature Extremes
- Outdoor Signage or Underground Digital Applications



Specifications

Mechanical	Size (W x D x H)	15.39" x 18.08" x 6.70" (390.91mm x 459.23mm x 170.18mm)
	Weight	36 lbs. (16.30 kg.)
	Temperature	0°C - 50°C (32°F - 122°F)
	Humidity	0 - 95%RHNC
	Altitude	0 to 10,000 ft. (0 - 3,000M)
	Power Supply	300 Watts
	Processor	Flexible ATX MB Options
	CPU	LGA775 package - Pentium 4, Core 2 Duo
Peripherals		(1) 3½" SATA HD and/or Flash
Interface	Ports	(4) USB
		(1) Parallel (DB25S)
		(1) Serial (DB9M)
		(1) Audio Port Set
		10/100/1000 GB LAN (RJ45)
		(1) Keyboard PS/2
		(1) Mouse PS/2
		(1) VGA (DB15S)
	Expansion	(1) PCI Express X16
		(2) PCI Express X1
Order Guide	Consult Factory for Assistance	

COMARK CORPORATION

www.comarkcorp.com